



# Centre of Structural Steel

Manufacture | Stock | Supply

[www.dsssteel.com](http://www.dsssteel.com)

OFFSHORE | ONSHORE & CONSTRUCTION | OIL & GAS

MARINE





## PROFILE

DSS STEEL LLC, formerly known as Dayal Steel Suppliers LLC, is a fully owned subsidiary of reputable Taurani Holdings Ltd. Established in 1976 as a medium sized building material company, DSS STEEL has evolved as one of the most recognized enterprises in the steel industry with core business being import, export, stock and supply of Pipes, Tubes and Structural Steel products.

As an ISO:9001 certified company, DSS STEEL sources its Long and Flat products in various sizes and specifications from some of the world's most reputable manufactures, and procures Tubes and Pipes from its sister concern - Universal Tube and Plastic Industries (UTP), THL Tube and Pipe Industries LLC and KHK Scaffolding & Formwork Ltd. LLC. to provide its customers world class products at the most competitive prices.

The company has been proficiently catering to Oil & Gas, Water Treatment & Desalination, Construction and infrastructure, Pre-Engineering Building, Machine & Equipment, Marine, Shipbuilding & Ship Repair, Auto Body Fabrication and various other allied industries.

With its main offices and stocking/distribution facilities at Ras Al Khor industrial area and National Industries Park Dubai, the company is complemented by strong sales network in other GCC countries to efficiently service its vast client base across United Arab Emirates, Middle east and Africa.

## MISSION

To deliver continuous improvement in business and exceeding expectations by pioneering change and empowering all stakeholders

## VISION

To build a sustainable future through innovation and partnerships

## VALUES

Honorable  
Synergistic  
Transformational  
Customer-Centric  
Sustainable



**1976**

Year of  
Establishment



**2800+**

Satisfied  
Customers



**6+6**

Branches &  
Warehouses



**20 COUNTRIES**

Our Global  
Footprint

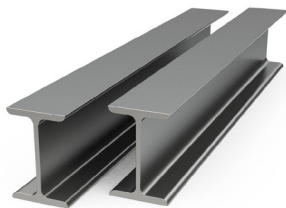


# INDEX



## PIPES & TUBES

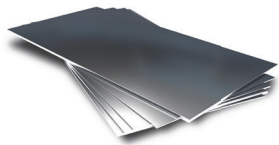
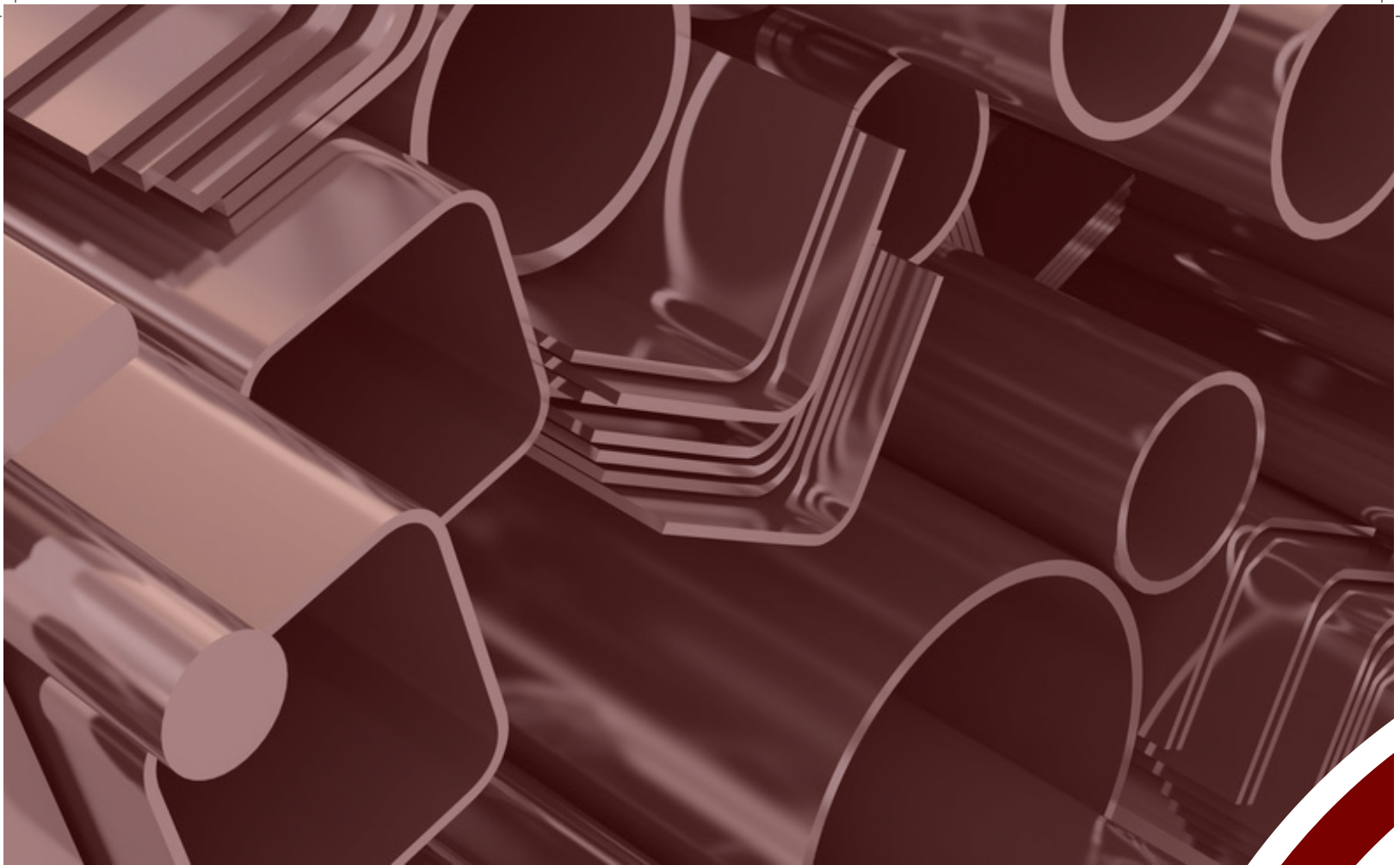
Black & Hot Dipped Galvanized Steel Pipes  
M S Square Hollow Sections  
M S Rectangular Hollow Sections



## LONG PRODUCTS

Universal Beams  
Universal Columns  
American Wide Flange Beams  
European Beams  
JIS Wide Flanges Shape  
JIS Channels  
European Standard Channels (UPN)  
Parallel Flange Channels (PFC)  
MS Equal Angles  
MS Unequal Angles  
Mild Steel Round Bars  
Shafting / Bright Bars  
M S Square Bars





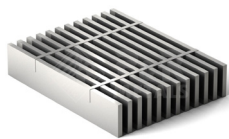
## FLAT PRODUCTS

Hot Rolled Steel Plates  
Mild Steel Flats  
Hot Rolled Steel (Coil/ Strip/ Sheets)  
Cold Rolled Steel (Coil/ Strip/ Sheets)  
Aluminum Plain Sheets  
Aluminum Coils  
Chequaered Plates



## GI, PPGI & STAINLESS STEEL

Hot Dipped Galvanized Steel Coils & Sheets  
Prepainted Galvanized Iron Coils  
Stainless Steel Coils & Sheets



## MISCELLANEOUS

MS Gratings  
Expanded Metal

# TUBES & PIPES

## Black & Hot Dipped Galvanized Steel Pipes

Type	Black & Hot Dipped Galvanized Steel Pipes
Size range	1/2" to 24"
Standard	EN10225 : 2004, ASTM A53 Gr. A SCH 40, ASTM A53 Gr. B SCH 40

## Seamless Pipes

Type	Mild Steel Pipes
Size range	1/2" to 12"
Standard	ASTM A106/ ASTM A53 Gr. B SCH 40

## MS Square Hollow Sections

Type	Cold Formed Welded Square Tubes
Size range	19 mm x 19 mm to 400 mm x 400 mm
Standard	S235 JRH/ S275 JOH/ S275 J2H/ S355 JOH/ S335 J2H

## MS Rectangular Hollow Sections

Type	Cold Formed Welded Square Tubes
Size range	40 mm x 20 mm to 500 mm x 300 mm
Standard	S235 JRH/ S275 JOH/ S275 J2H/ S355 JOH/ S335 J2H



# LONG PRODUCTS

## Beams

Type	Universal Beams
Size range	127 x 76 mm to 914 x 419 mm
Standard	EN10025 - S275JR/ S355J0/ S355J2, ASTM A36/ A572 Gr. 50/ A992
Type	Universal Columns
Size range	152 x 152 mm to 356 x 406 mm
Standard	Standard : EN10025 - S275JR/ S355J0/ S355J2, ASTM A36/ A572 Gr. 50/ A992
Type	American Wide Flange Beams
Size range	W 6" x 4" to W 36" x 12"
Standard	EN10025 - S275JR/ S355J0/ S355J2, ASTM A36/ A572 Gr. 50/ A992
Type	European Beams
Size range	IPE - 80 to 600 mm, IPEAA - 100 to 200 mm, HE A/ HE B - 100 mm to 600 mm
Standard	EN10025 - S275JR/ S355J0/ S355J2/ A572 Gr. 50
Type	JIS Wide Flange Beams
Size range	I Beam - 150 x 75 mm to 900 x 300 mm H Beam - 100 x 100 mm to 400 x 400 mm
Standard	Standard : EN10025 - S275JR/ ASTM A36/ A572 Gr. 50/ SS400/ Q235B





# LONG PRODUCTS

## Channels

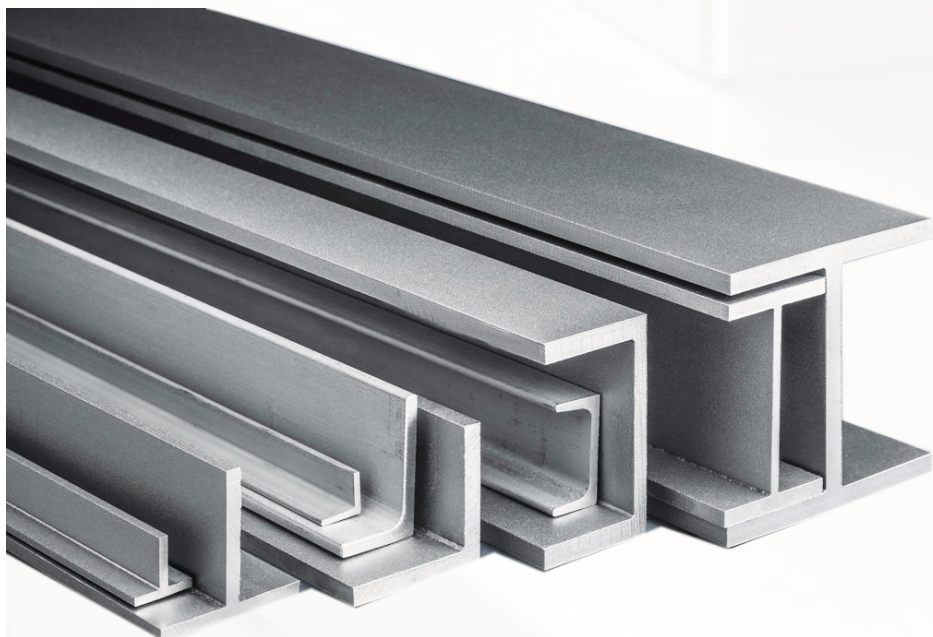
Type	<b>JIS</b>
Size range	Size : 50 mm x 25 mm to 380 mm x 100 mm
Standard	EN10025 - S275 JR/S355 JR/ S355 J0/ SS400
Type	<b>UPN</b>
Size range	Size : 50 mm to 400 mm
Standard	EN10025 - S275 JR/S355 JR/ S355 J0/ SS400
Type	<b>PFC</b>
Size range	100 mm x 50 mm to 430 mm x 100 mm
Standard	Standard : EN10025 - S275 JR/S355 JR/ S355 J0/ SS400

## MS Angles

Type	<b>Equal</b>
Size range	20 mm x 20 mm to 200 mm x 200 mm
Standard	Standard : EN10025 - S275 JR/S355 JR/ S355 J0/ SS400
Type	<b>Unequal</b>
Size	75 mm x 50 mm to 200 mm x 100 mm
Standard	EN10025 - S275 JR/S355 JR/ S355 J0/ SS400

## MS Bars

Type	<b>Round Bars</b>
Size	6 mm to 100 mm
Type	<b>Shafting/ Bright Bars</b>
Size	6 mm to 200 mm
Type	<b>Square Bar</b>
Size	10 mm to 60 mm
Standard	ASTM A36/ SS400/ S275 JR/ S355 JR



\* Complete product data guide available on request

# FLAT PRODUCTS

## HR Sheets/ Coils & Chequered Sheets

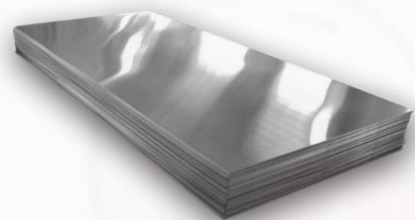
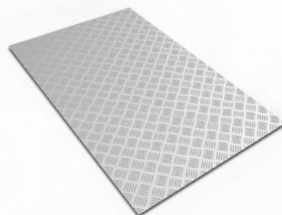
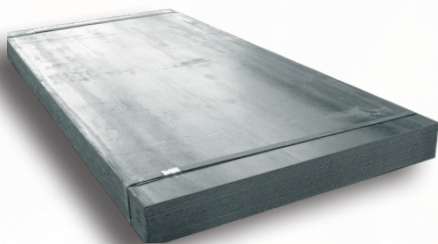
Type	<b>Sheets</b>
Thickness	2.7 mm to 12 mm
Width	1219 mm x 2438 mm/ 1500 mm x 6000 mm
Type	<b>Coils</b>
Thickness	1.0 mm to 12 mm,
Width	1219 mm/ 1500 mm/ 2000 mm
Type	<b>Chequered Sheets</b>
Thickness	1.8 mm to 12 mm
Width	1219 mm x 2438 mm/ 1500 mm x 6000 mm
Grade	S235/ S275/ ASTM A36/ SS400

## Aluminum Sheets/ Coils

Type	<b>Plain Sheets</b>
Thickness	0.4 mm to 10 mm
Width	1219 mm x 2438 mm
Alloy	AA1100/ AA1200/ AA3003/ AA5005
Type	<b>Coils</b>
Thickness	0.5 mm to 3 mm
Width	1219 mm/ 1500mm
Alloy	AA1100/ AA1200/ AA3003
Type	<b>Chequered Sheets</b>
Thickness	1.8 mm - 10 mm
Width	1219 mm x 2438 mm
Alloy	AA1100

## Hot Rolled Steel Plates

Type	<b>Hot Rolled Steel Plates</b>
Thickness	4 mm to 60 mm
Width	2 M/ 2.5 M/ 3.05 M
Length	6 M/ 12 M
<b>Standard</b>	
Commercial	ASTM A36/ S275 JR/ S355 JR/ S355 J0
Offshore	S355J2/ S355K2/ AP12H50
Boiler/ Pressure Vessel	ASTM/ ASME 60/ 65/ 70 (Normalized/ NAC)
Shipbuilding Grade	ABS : A/ B/ C/ AH32/ AH36/ EH36



# GI, PPGI & STAINLESS STEEL PRODUCTS

## Galvanized Coils & Sheets

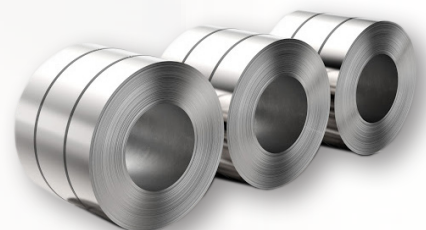
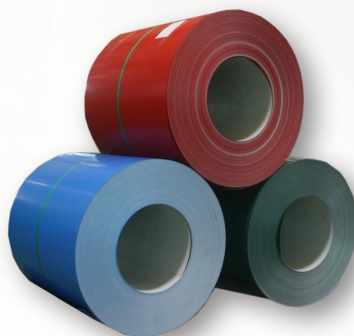
Type	Regular/ Zero Spangle
Thickness	0.28 mm to 4.0 mm
Width	1219 mm/ 1500 mm
Coating	Z120/ Z180/ Z275
Grade	ASTM A-653

## Prepainted Galvanized Iron (PPGI) Coil

Type	Prepainted Steel Coil/ Sheet
Thickness	0.12 mm to 2.00 mm
Width	350 - 1250 mm
Coil ID	610/ 508
Type of Base Metal	Hot - Dip Zinc Coated
Standard	EN10142/ EN10147/ EN10292/ JIS G3302/ ASTM A653
Steel Grade	DX51D+Z, DX52D+Z, DX53D+Z/ S280GD+Z, S350D+Z, S550GD+Z/ SGCC, SGCD, SGC340/ CS Type C, CS Type A, CS Type B, FS Type A/ FS Type B, SS275, SS550, SS340 class 1
Colors	RAL, RAL 9002, RAL 1001

## Stainless Steel

Type	Coils & Sheets
Thickness	0.30 - 50 mm
Width	1219/ 1250/ 1500/ 2000 mm
Coil ID	508/ 610
Grade	304/ 316L/ 304L/ 430/ 310S
Finishes	Hot Rolled No. 1 finish, 2B finish, Brush finish, Hairline finish, Mirror finish.





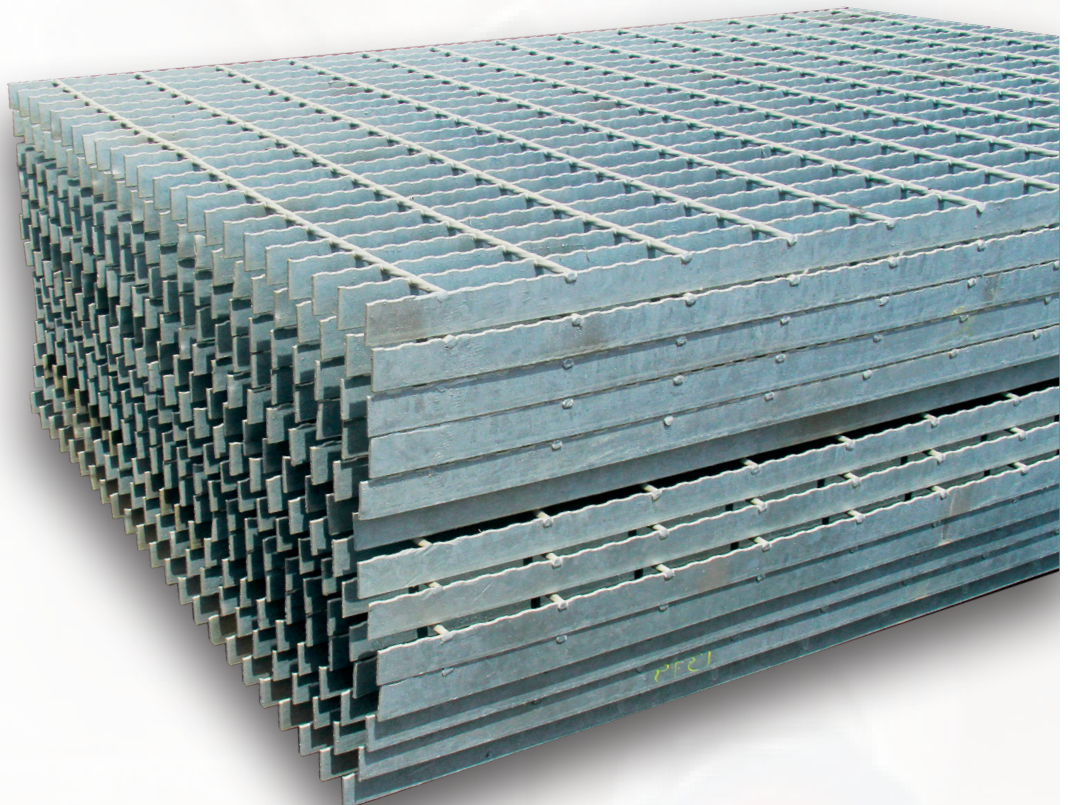
# MISCELLANEOUS PRODUCTS

## Galvanized

Type	Plain or Serrated
Size	0.9 M x 6 M
Load bearing Bar	20 mm x 3 mm to 50 mm x 5 mm
Pitch size	30 mm x 100 mm/ 40 mm x 100 mm

## Expanded Metal

Specification	JIS G3131 SPHC
Size	4' x 8'
Thickness	1.5 mm to 8 mm



# STEEL GRADES

Structural Steel grades according to the following national and international standards can be supplied :

STRUCTURAL STEEL					DESIGNATION
EN 10025	ASTM	JIS G 3101 JIS G 3106	CSA G 40 - 21	BS 4360	
Fe 360 B	-	-	-	-	S 235 JR
Fe 360 B FN	-	-	-	-	S 235 JRG 2
Fe 360 C	-	-	-	-	S 235 JO
	A 36	SS 400	260 W	-	-
	A 36	SM 400 A1B/C	-	-	-
Fe 430 B	-	SS 400	-	43 B	S 275 JR
Fe 430 C	-	-	-	-	S 275 JO
Fe 430 D1	-	-	-	-	S 275 J 2 G3
Fe 430 D2	-	-	-	-	S 275 J 2 G4
Fe 510 B	A 572 Gr. 50	SS 490	350 W	50 B	S 355 JR
Fe 510 C	-	-	-	-	S 355 JO
Fe 510 D1	-	-	-	-	S 355 J 2 G3
Fe 510 D2	-	-	-	-	S 355 J 2 G4
Fe 510 DD1	-	-	-	-	S 355 K 2 G3
Fe 510 DD2	-	-	-	-	S 355 K2 G4

# STEEL SPECIFICATIONS

AMERICAN STANDARD	EUROPEAN STANDARD	JAPANESE STANDARD	SOUTH AFRICAN STANDARD	YIELD STRENGTH	TENSILE STRENGTH
Lower Strength (for workability and weldability)					
ASTM A 283 Gr. C	EN 100T25 S235JR	JIS G3101 SS300	SABS 1431 GR. 420	235 MPa min	340 - 470 MPa
	DIN 17100 RSt 37-2		WA/C		
	BS 4360:Gr 40A/B/C				
Normal Strength (for general use)					
ASTM A 36	EN 10025 S275 JR	JIS G3101 SS400	SABS 1431 GR 300WA/C	275 MPa min	430- 550 MPa
	DIN 17100 Rst 44-2				
	BS 4360:Gr 43A/B/C				
Higher Strength Microalloyed Steel					
ASTM A572 GR. 50	EN 10025 S355JR	JIS G3101 SS490	SABS 1431 GR 350WA/C	355 Mpa min	490-630 MPa
	DIN 17100 RSt 52-2				
	BS 4360:Gr 50A/B/C				
Weathering Steel - for improved corrosion resistance (Other Standards)					
			COR - TEN / A	345 MPa min	480 MPa min



## GROUP PROFILE



**TAURANI**  
HOLDINGS LTD

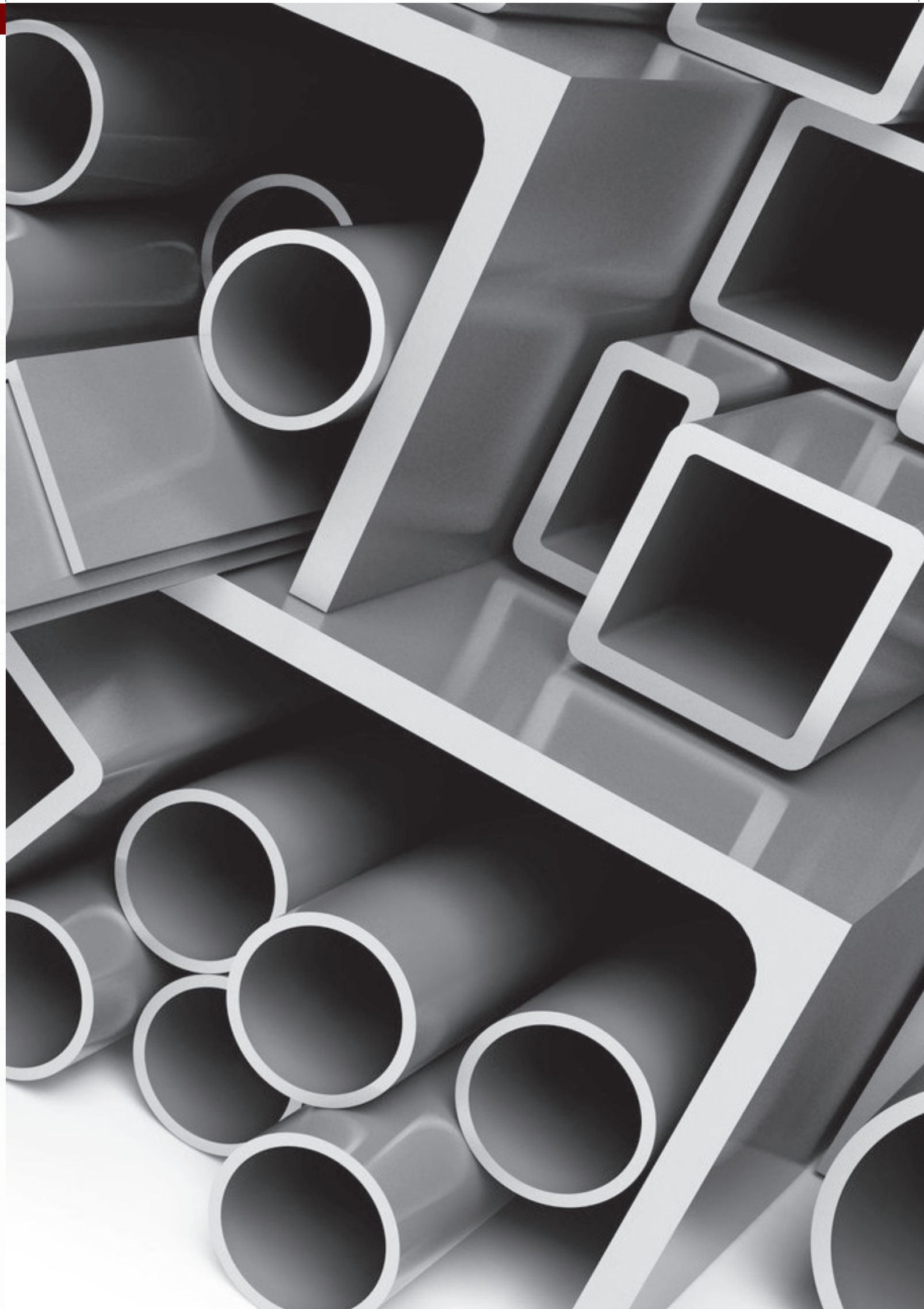
TAURANI HOLDINGS LTD is a multinational conglomerate headquartered in Dubai, United Arab Emirates. It operates in four continents with more than 10,000 employees worldwide. THL was founded in 1976 as a group of manufacturing, trading and servicing companies catering to a vast multitude of sectors across various markets.

With annual turnover of US\$200 Million, the group has gradually ventured into every trade arena through well-defined business strategies. An able leadership and a highly dedicated workforce across the group are the key elements that has engineered its evolution.

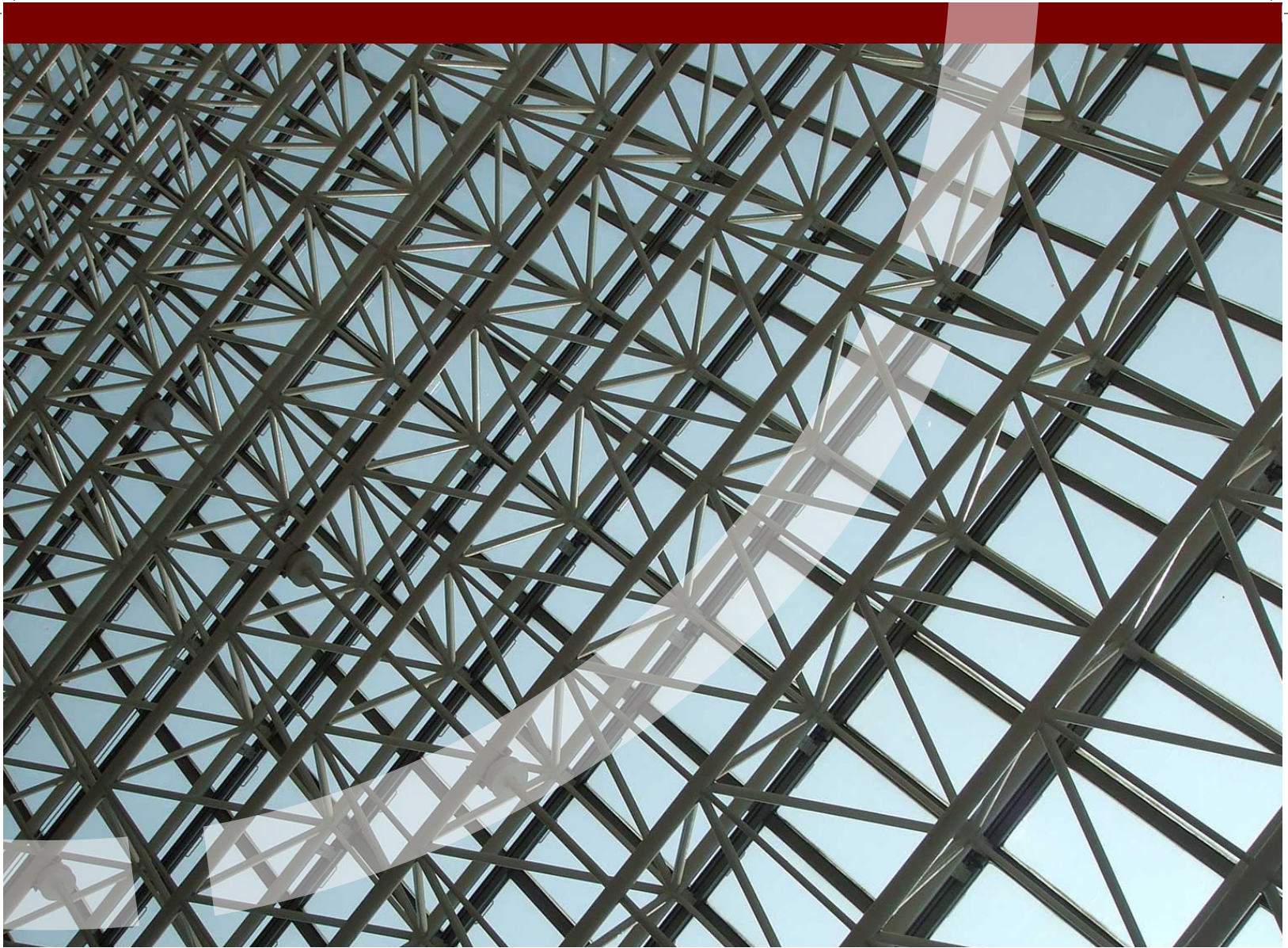
As a global enterprise, the group's ability to understand, innovate and operate in a multicultural world ensures its long-term sustainability and, specifically, impacts its ability to meet the group's underlined growth trajectory.



## GROUP ASSOCIATES











 P O Box 5993, Industrial Area-II  
Ras Al Khor, Dubai, UAE  
 +971 4 889 0889

 P O Box 5993, National Industrial Park  
Jebel Ali, Dubai, UAE  
 +971 4 889 0880

[www.dsssteel.com](http://www.dsssteel.com), [info@dsssteel.com](mailto:info@dsssteel.com)

## SALES NETWORK

### Jebel Ali

#### DSS STEEL FZE

T: +971 4 881 8808  
[info@dsssteel.com](mailto:info@dsssteel.com)

### Ajman

#### DSS STEEL LLC

T: +971 4 889 0940  
[infoajman@dsssteel.com](mailto:infoajman@dsssteel.com)

### Ras Al Khaimah

#### DSS STEEL LLC

T: +971 4 889 0835  
[inforak@dsssteel.com](mailto:inforak@dsssteel.com)

### Al Ain

#### DSS STEEL LLC

T: +971 4 889 0930  
[infoalain@dsssteel.com](mailto:infoalain@dsssteel.com)

### Oman

#### STRUCTURAL STEEL TRADING (FZC) LLC

Sohar, Oman  
T: +968 91956077

### Qatar

#### GULF BUILDING MATERIALS WLL

Doha, Qatar  
T: +974 44 600164